



Since 2006



Sunsai Pharma

Equipments Pvt. Ltd.



The Best Lifeline of Pharma Industry

An ISO 9001:2015 & GMP Certified Organization



**Managing Director
Mr. Meghan Hemant Bhatte**



Factory



Office



R n D Lab

Our Valuable Clients



Company Profile

Sunsai Pharma Equipment Pvt Ltd, was established in 2006, by Mr Meghan Bhatte. He is an experienced engineer /Technocrat having 37 years of experience of designing, manufacturing and supply. He has passion for Development, Innovation and doing research for new applications in Pharma processing machines such as Oral Solid Dosage Formulation, Advanced Tablet coating Machines, Liquid Syrup making machines Pellet Making and Automatic Ointment production plants from lab scale 1 kg to high capacity to production scale up to 1000 kg. Material handling and transfer systems with minimum human involvement.

Company has a facility to conduct process trials for customers to validate their process and the machines. In some cases Our lab facilities were even rented on a long term basis to stabilize process parameters by conducting exhaustive trials with their products . It was helpful to build the customer base in the initial stage. Thus we could build a large customer base, their confidence and trust built strong relationships. Today the company has a vast customer bank enjoying full customer support service.

Progressively the company has developed many new machines with improved technology. Process automation was developed rapidly to qualify machines as per latest regulatory standards. Sunsai offers single window service for all product lines. Sunsai products are FDA, CE, EU qualifiable

Sunsai has a workshop facility of about 20,000 square feet production area at Valiv Phata Sativali Road, Vasai. Company has a strength of around 80 person involving qualified and experienced mechanical, electrical and electronic engineers committed to offer presales and post sales support service to all customers. Online FAT by video call is regularly offered.

Installation and commissioning on line support by service engineers. Company is committed to continuous upgradation and quality enhancement of products. the prime goal of the company. Satisfied customers are the true assets of the company. We are proud to be a part of the progress of the Pharmaceutical Industry in India and Abroad.

Core team of Sunsai has total 35 years of experience in design, development and production of Pharma machines.



GRANULATION EQUIPMENTS



Rapid Mixer Granulator:- Rapid Mixer and Granulator with specially designed high shear chopper blades for efficient dry mixing and wet granulation in one Bowl System with cGMP compliance.

R&D Models:- 1ltr, 2ltr, 3ltrs, 5ltrs, 10ltrs, 15ltrs.

Production Models:- 30ltrs, 60ltrs, 150ltrs, 250ltrs, 400ltrs, 600ltrs, 800ltrs, 1200ltrs, 1600ltrs.



Sunmill Wet:- The SUNMILL WET is a conical screen mill. cGMP compliance with low heat, low dust and low noise.

R&D Models:- SMW 500.

Production Models:- SMW 100, SMW 200, SMW 300.



Fluid Bed Dryer:- The System is based on Air suspension technology with cGMP compliance. The SFBD is used for Drying of powders and Granules (Capable of being fluidised) by fluidising them in the expansion chambers with Filtered and heated air.

R&D Models:- Mini FBD 500gms, 1kg, 5kg.

Production Models:- 10kg, 30kg, 60kg, 120kg, 250kg, 500kg.



Sunmill Dry:- The SUNMILL DRY is a conical screen mill. A high speed rotating impeller forces the product through the perforation of fixed cone shaped screen to reduce size. cGMP compliance with low heat, low dust and low noise.

R&D Models:- Sunmill R&D

Production Models: Sunmill SMOD-100, SMOD-200, SMOD-300.



Vibro Sifter:- The Vibro sifter works on Gyrotory principle. Gyro motor gives horizontal, vertical and tangential component of vibration due to which material is spread over the screen and starts rotating throughout the periphery.

R&D Models:- 12"(300mm)

Production Models :- 20"(500mm), 24"(600mm), 30"(750mm), 36"(900mm), 48"(1200mm).



Blender:- The Blender is simple machine to blend a dry powder and / granules etc. The geometry of blender with the baffle fitted inside the blender makes the system perfect to achieve homogeneous mix in reasonable time.

R&D Models:- 5Ltr, 10Ltr, 20Ltr, 30Ltr.

Production Models:- 50Ltr, 100Ltr, 200Ltr, 300Ltr, 500Ltr, 1000Ltr, 1500Ltr, 2000Ltr, 3000Ltr, 5000Ltr.



Advance coater:- SUNCOATER is an automated tablet coating system for efficient film and/or sugar coating of tablets with cGMP compliance in closed condition. During the coating process, coating fluids are sprayed through Air atomizing spray gun. The coated tablets are dried with filtered, heated and dehumidified air to produce uniformly coated tablets.

R&D Models:- SAC 9", SAC 12", SAC 15", SAC 18".

Production Models:- SAC 24", SAC 30", SAC 36", SAC 48", SAC 60", SAC 66", SAC 72".

PELLETISATION EQUIPMENTS

Rapid Mixer Granulator:- Rapid Mixer and Granulator with specially designed high shear chopper blades for efficient dry mixing and wet granulation in one Bowl System with cGMP compliance.

R&D Models:-1ltr,2ltr,3ltrs,5ltrs,10ltrs,15ltrs,

Production Models:-30ltrs,60ltrs,150ltrs,250ltrs,400ltrs,600ltrs,800ltrs,1200ltrs,1600ltrs.

Extruder:- The Extruder is a self contained compact machine for special purpose of making Pellets. Raw material is introduced axially from the feed hopper into rotor housing where it is exposed to rotating screw which conveys the material towards rotor end. Rotor forces the material to pass through the mesh with the effect of scraping impact resulting information of cylindrical extrudes.

R&D Model-Single screw EXT-20,EXT-30,EXT-60.

Production Models:Twin Screw

TSEXT-100,TSEXT-130,TSEXT-150,TSEXT-180.

Spheroniser:- The Spheroniser is a self-contained compact machine for the special purpose of making Pellets, The extrudes are dropped from the feed hopper into the spheroniser to get exposed to rotating checker plate and to get sized. further exposure to the surface of checker plate results in conversion of the extrudes into the shape of spheres i.e. pellets.

R&D model-SPH 75,SPH 150,SPH 250.

Production Models:SPH 500,SPH 700,SPH 900,SPH 1200.

Tray Dryer:- The Tray Dryer is a drying equipment developed for drying pellets granules, powders. The design and geometry of the tray drier ensures that the moisture content of the product is removed in minimum time.

R&D Models:-TD4,TD6,TD8,TD12.

Production Models:-TD24,TD48,TD96,TD200.

Vibro Sifter:- The Vibro sifter works on Gyrotory principle. Gyromotor gives horizontal, vertical and tangential component of vibration due to which material is spread over the screen and starts rotating through out the periphery.

R&D Models:-12", (300mm)

Production Models-20"(500mm),24"(600mm),30"(750mm),36"(900mm),48"(1200mm).

Fluid Bed Coater:- The System is based on Air suspension technology with cGMP compliance. The SFBC is used for bottom spray coating and drying of Pallets (Capable of being fluidised) by fluidising them in the expansion chambers with Filtered and heated air.

R&D model-1kg,5kgs,10kgs.

Production Models:-30kgs,60kgs,120kgs,200kgs,300kgs.

Coating Pan:- The system is used to coat Tablets and/or particles 2-3 mm with the coating ingredients this equipment is provided with ellipsoidal shape bowl with baffles attached inside to achieve uniform and homogeneous coating.

R&D Models:SCP 9",SCP 12".

Production Models:-SCP 12",SCP 24",SCP 30",SCP 36",SCP 48",SCP 60",SCP 72".



LAB MODEL

Model	Working Capacity
SRMG-1L	100-300 Grm.
SRMG-2L	100-500 Grm.
SRMG-3L	500 Grm.- 1Kg.
SRMG-5L	1-1.5 Kgs
SRMG-10L	2-3 Kgs.
SRMG-15L	3-5 Kgs.

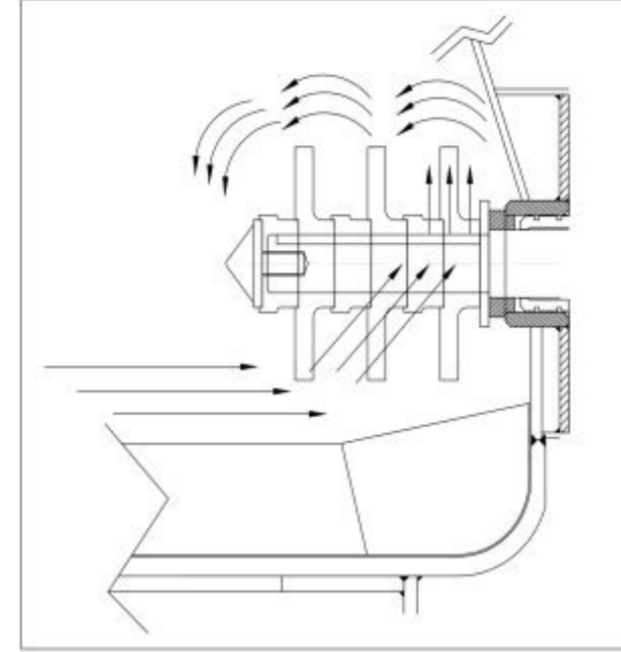
Inter Changeable Models

SRMG-1L to 5L
SRMG-5L to 15L

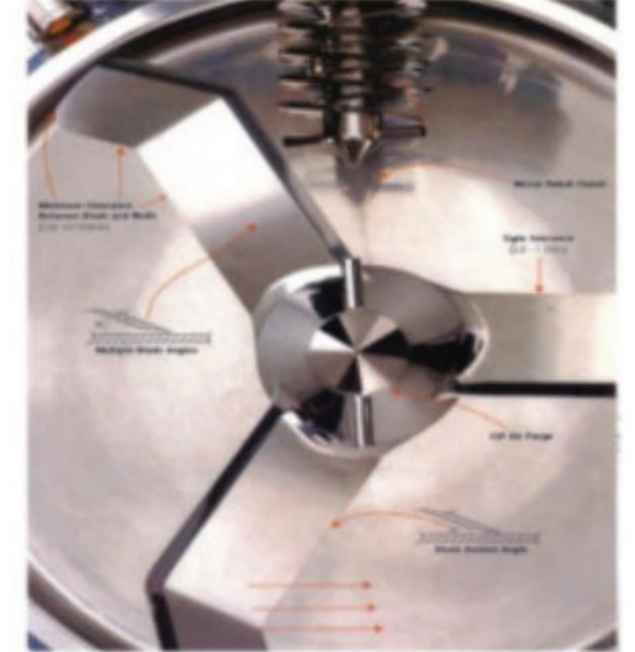
PRODUCTION MODEL

Model	Working Capacity
SRMG-30L	7-10 Kgs
SRMG-60L	15-20 Kgs.
SRMG-150L	40-50 Kgs.
SRMG-250L	60-75 Kgs.
SRMG-400L	100-120 Kgs.
SRMG-600L	150-200 Kgs.
SRMG-800L	200-250 Kgs.
SRMG-1200L	350-400 Kgs.
SRMG-1600L	450-500 Kgs.

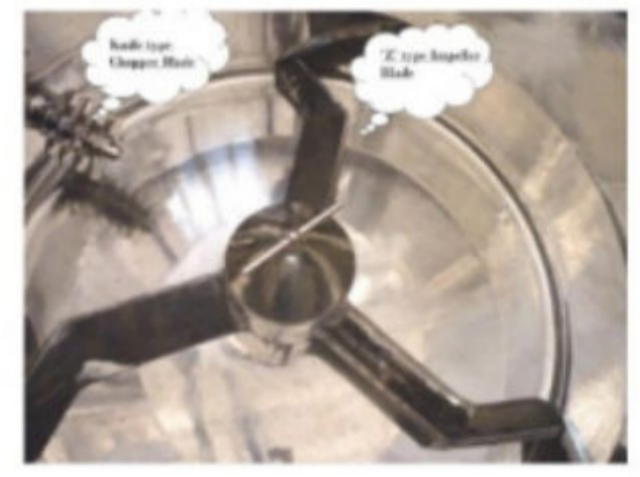
Rapid Mixer Granulator



Knife Chopper



Specialized 'Z' Impeller



The RMG is a batch type Mixer cum Granulator where in, a sub-lot containing suitable ingredients is charged into process bowl. Initially, excipients are dry blended and then binder paste solution is administered to charged excipients. Particles movement creating by rotation the impeller blade mixes homogeneously. The flat bottomed and truncated conical top, process bowl aids in creating spiral flow pattern that continuously causes cohesive material to provide uniform mixing. Impeller blade effects tangential movements of raw material for uniform material accumulation on bowl wall as well as producing wet granules.



Advanced power processing technology- "Z" blade impeller is located at the base of the processing chamber where it impacts energy to the material. As material moves on a spiral motion within the chamber the specially designed bowl geometry is designed to act in concert with the impeller blade to produce and optimize material flow pattern. The Knife type chopper blade design is very special. The shape of the Blade will produce a very highly cutting action. The chopper blade assembly is mounted on wall of processing chamber to apply additional shear, evenly distributing the liquid binder and breaking any oversized agglomerates. SUNSAI'S Rapid Mixer Granulator Special Features RMG Angle of Cone RMG is specially Designed "Z" Type Impeller High shear Knife Type Chopper blades Efficient Dry Mixing & wet Granulation and Most IMP No Waste age of Material & TIME SAVING.

FBD-500gms



FBD-1 KG



FBD-500gms



FBD-RnD 5 KG

Lab Model

Sr. No.	SFBD Model
1	Fluid Bed Dryer 500 Gms
2	Fluid Bed Dryer 1 Kg
3	Fluid Bed Dryer 3 Kgs
4	Fluid Bed Dryer 5 Kgs
5	Fluid Bed Dryer 10 Kgs

Production Model

Sr. No.	SFBD Model
1	Fluid Bed Dryer 20 Kgs
2	Fluid Bed Dryer 30 Kgs
3	Fluid Bed Dryer 60 Kgs
4	Fluid Bed Dryer 120 Kgs
5	Fluid Bed Dryer 200 Kgs
6	Fluid Bed Dryer 250 Kgs
7	Fluid Bed Dryer 300 Kgs
8	Fluid Bed Dryer 350 Kgs
9	Fluid Bed Dryer 500 Kgs

FLUID BED DRYER



The SFB is used for Drying of wet powders and granules(Capable of being fluidised)with cGMPcompliance.The System is based on Air suspension technology.The main unit consists of the following

- a)Air inlet chambers plenum**
- b)Process containers equipped with sandwich plate construction.**
- c)Expansion chamber cum Filtration chamber.**

Wet Powders / Granules to be processed are filled the process bowl.Substrates are fluidised dried in expansion chambers with heated air supplied through filters of 10 micron and 5 micron & 0.3 HEPA. During fluidisation process the filter bag maybe shacked to ensure non-adherence of fines generated from process.Exhaust blower evacuates fluidising air through suspended substrates.

Total Solution For Your Granulation Process Sunsai Close Transfer Granulation System



Sunsai's Close Transfer Granulation System
Sunmill and Transferring material into the
Fluid Bed Dryer Bowl to Sunmill Dry to O



Sunsai Vertical Cone Screw Mixer

Mixers with capacity from 100 Kg to 10,000 Kgs per batch.

All batch sizes are mixed with the same efficiency i.e. 100 Kg to 10,000 Kgs products are mixed uniformly within short time. Can Start or stop mixer in fully loaded condition without causing any overload indication or increase in energy consumption.

Different type of material loading & unloading system can be employed as per product properties & flow characteristics.

This is useful for process automation & saving human labour, cost, time consumption.

This avoids product loss due to product spillage & loss due to handling. This mixer can be installed for online process as well as standalone mixer.



Close Transfer System Capacity
1-2 Kgs
3-5 Kgs
10-20 Kgs
30-60 Kgs
100-120 Kgs
150-200 Kgs
250-300 Kgs
450-500 Kgs

m consists of Rapid mixer Granulator, Online wet Fluid Bed Dryer again transferring material from Octagonal Blender via Vaccum Transfer System.

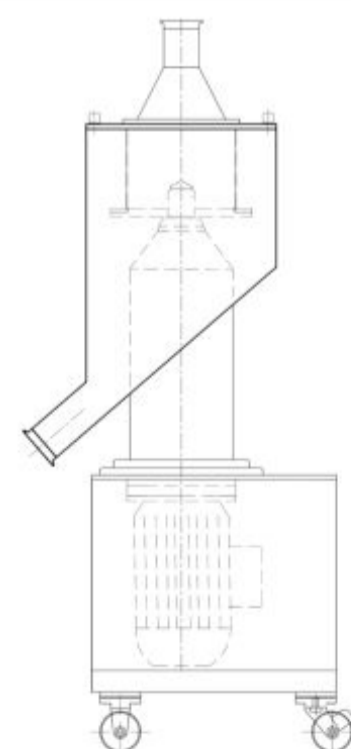


Vaccum Transfer System (Powder Conveyor System)



If the product needs to be conveyed under exclusion of oxygen (insert).For transporting toxic, moist and other products with critical and difficult material properties.Containers can be charged in low-or high-pressure atmosphere.

High Speed Sieving Rotary Sifter



High speed Sifter is the machine,which work very fast & produce very high output.This machine is mainly used to catch the impurities,which comes from initial Raw material be forecharging stage.Material charge from top & on very high speed the screen will be rotate.With in no time material will be discharge immediately.

SUNCOATER / AUTOCOATER (STANDARD)

SUNCOATER is tablet coating system for efficient film coating of tablet cores with cGMP compliance in closed condition. The main Pan unit consist of a cylindrical perforated pan with conical ends in a SS double-walled enclosure.

During the coating process, coating fluids are sprayed (film coating) through multiple Airborne Spray Gun(s) mounted within the pan. A peristaltic Pump is employed for precise delivery of coating fluids.

The tablet bed is gently and efficiently mixed during pan rotation with the aid of mixing baffles attached internally, with a pan. The coated tablets are dried with heated, dehumidified air supplied from an Inlet AHU-which contains a Heating system as well as filtration system of 10 micron, 5 micron and 0.3 micron HEPA Filters. As a result, applied coating is dried with non-contaminated, dust free and optimized volumes of air, for producing uniformly coated tablets.



Standard Coater

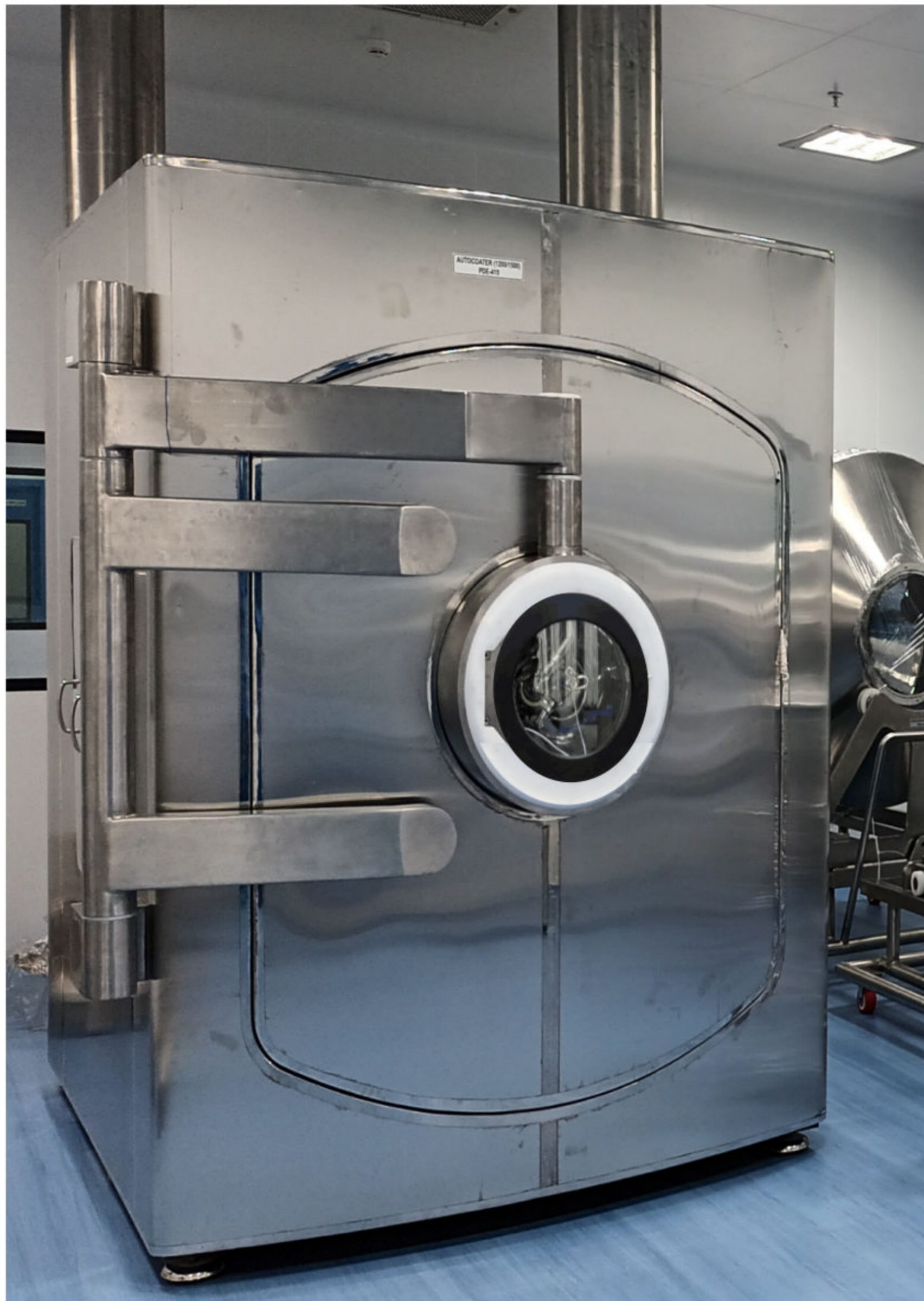
Model	Working Capacity
Suncoater-150	100-250 Grm.
Suncoater-225	300-500 Grm.
Suncoater-300	500 Grm.-1 Kg.
Suncoater-375	2-3 Kgs.
Suncoater-450	4-5 Kgs.
Suncoater-600	8-10 Kgs.
Suncoater-750	20-30 Kgs.
Suncoater-900	30-50 Kgs.
Suncoater-1200	120-150 Kgs.
Suncoater-1500	250-300 Kgs.
Suncoater-1700	400-500 Kgs.



R n D Model



ADVANCE SUNCOATER (Tablet Coating) with INTERCHANGABLE PAN FACILITY



VERY HIGH EFFICIENT COATING. NO AIR LOSS. NO HEAT LOSS. TOTALLY LEAK PROOF INFLATABLE SEALING DOOR. ALL 3 MAIN DOORS ON HINGE NO BOLTING REQUIRED. HUGE FRONT DOOR OPENING. INSTANT INTERCHANGEABLE PAN FACILITY. NO TOOLS REQUIRED FOR PAN REMOVAL AND INSTALLATION. PAN REMOVAL ON TROLLEY WITHIN TWO MINUTES.

A VERY SPECIAL CROSSOVER TYPE DESIGN BAFFLES WITH ANTI-SLIDING CROSS BAFFLES. BAFFLE DESIGN IS FORCING THE TABLET TO FOCUS EACH & EVERY TIME IN FRONT OF SPRAY GUNS. SPRAY GUN / ASSLY / DISTANCE / ANGLE / SPRAY PATTERN CAN BE ADJUSTED THROUGH PLC. ANIMATED PLC BASE PROGRAMS. SET YOUR 2nd BATCH WITHIN 5 MINUTES.

ALL ABOVE SPECIAL ADVANTAGES WILL HELP YOU TO DOUBLE THE PRODUCTION OUTPUT IN MINIMUM TIME & LESS MAN POWER.





Conical Mesh



Dome Mesh



Flat Screen



Radial Screen



Checker Plate



Pellets



R n D Lab Models

EXTRUDER

Model	Working Capacity
EXT-20	50-100 Grm.
EXT-30	100-500 Grm.
EXT-60	2-3 Kgs
TSEXT-100	30-50 Kgs
TSEXT-130	50-100 Kgs
TSEXT-150	75-150 Kgs
TSEXT-180	100-200 Kgs



SPERONISER

Model	Working Capacity
SPH-75	25-50 Grm.
SPH-150	100-500 Grm.
SPH-250	1-2 Kgs
SPH-500	15-20 Kgs
SPH-700	40-50 Kgs
SPH-900	75-100 Kgs
SPH-1200	100-200 Kgs

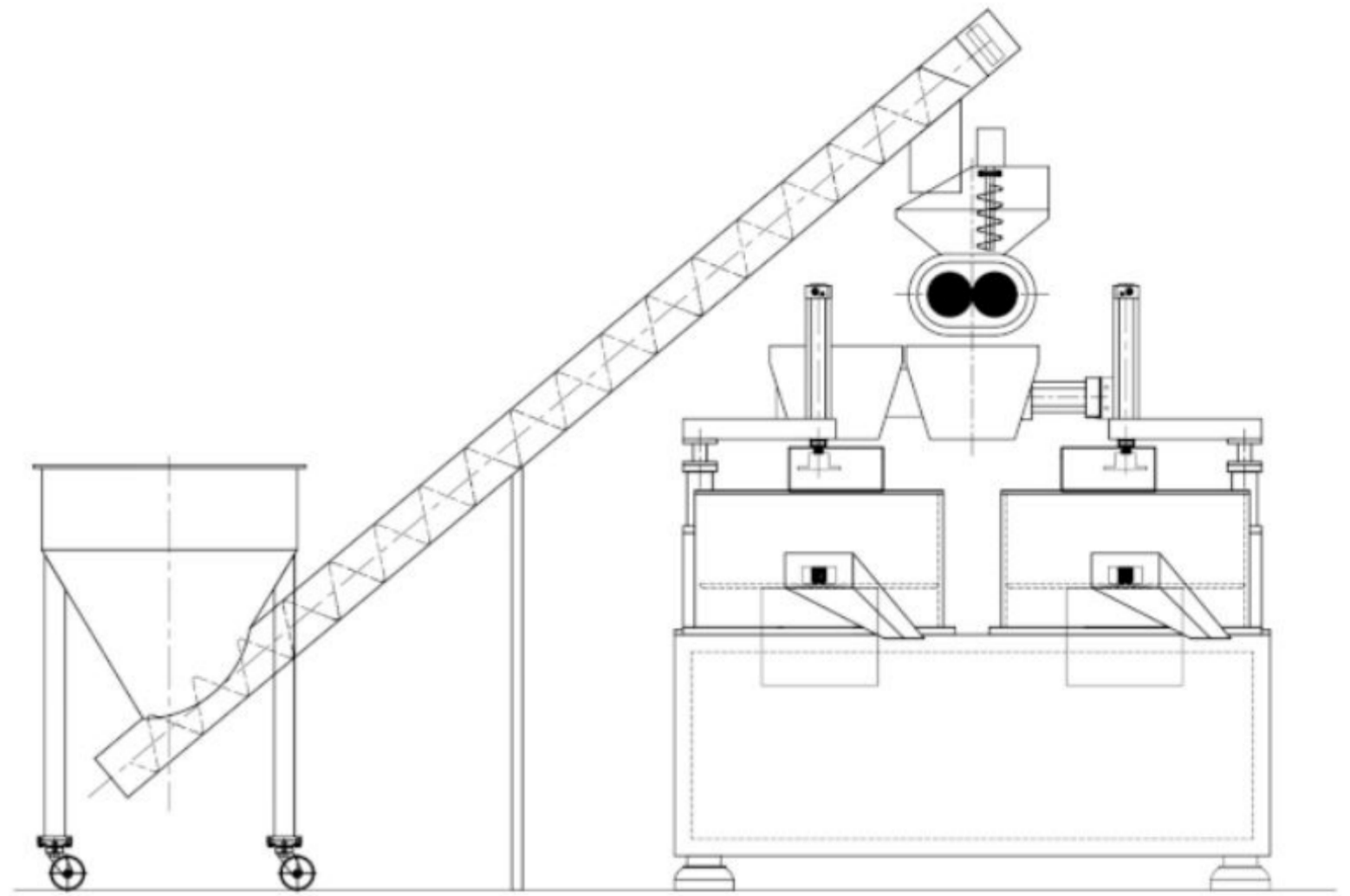
Fully Automatic Integrated System

TSEXT - 100 : 1 No. with SPH - 500 : 2 Nos.
 TSEXT - 130 : 1 No. with SPH - 700 : 2 Nos.
 TSEXT - 150 : 1 No. with SPH - 900 : 2 Nos.
 TSEXT - 180 : 1 No. with SPH - 1200 : 2 Nos.

Extruder - Spheroniser



Model :- 130-700



Model :- 150-900

The Extruder-Spheronisation process is commonly used in the pharmaceutical industry to make uniformly sized spheroids. It is especially useful for making dense granules for sustained controlled-release solid dosage oral forms with a minimum amount of excipients. Extruder is a first step in the extruder-spheronisation process. The size of the extruder screen aperture will dictate the approximate size of the resulting spheroids. However, extruder is often used to eliminate dust in formulations even when spheronisation is not the final objective. Spheronisation has many advantages & the process is useful in several ways : it can improve the product; simplify manufacturing processes and help to reduce costs. The process is well known and widely used in the pharmaceutical industry but spheronisation is becoming increasingly recognized in other areas of industrial materials handling. The size of the spheres are determined by the diameter of the extrudes used for the spheronisation process. The most common groove pattern used for spheroniser discs is the square cross-hatched square design, where the processing surface is covered with a grid of truncated pyramids.



SFBP - 1.5 Kg



LAB MODEL

Model	Working Capacity	No. of Wurster
SFBP - 1	700 Grm.-1 Kg.	1 No.
SFBP - 5	3-5 Kgs.	1 No.
SFBP - 10	6-10 Kgs.	1 No.
SFBP - 15	10-15Kgs.	1 No.

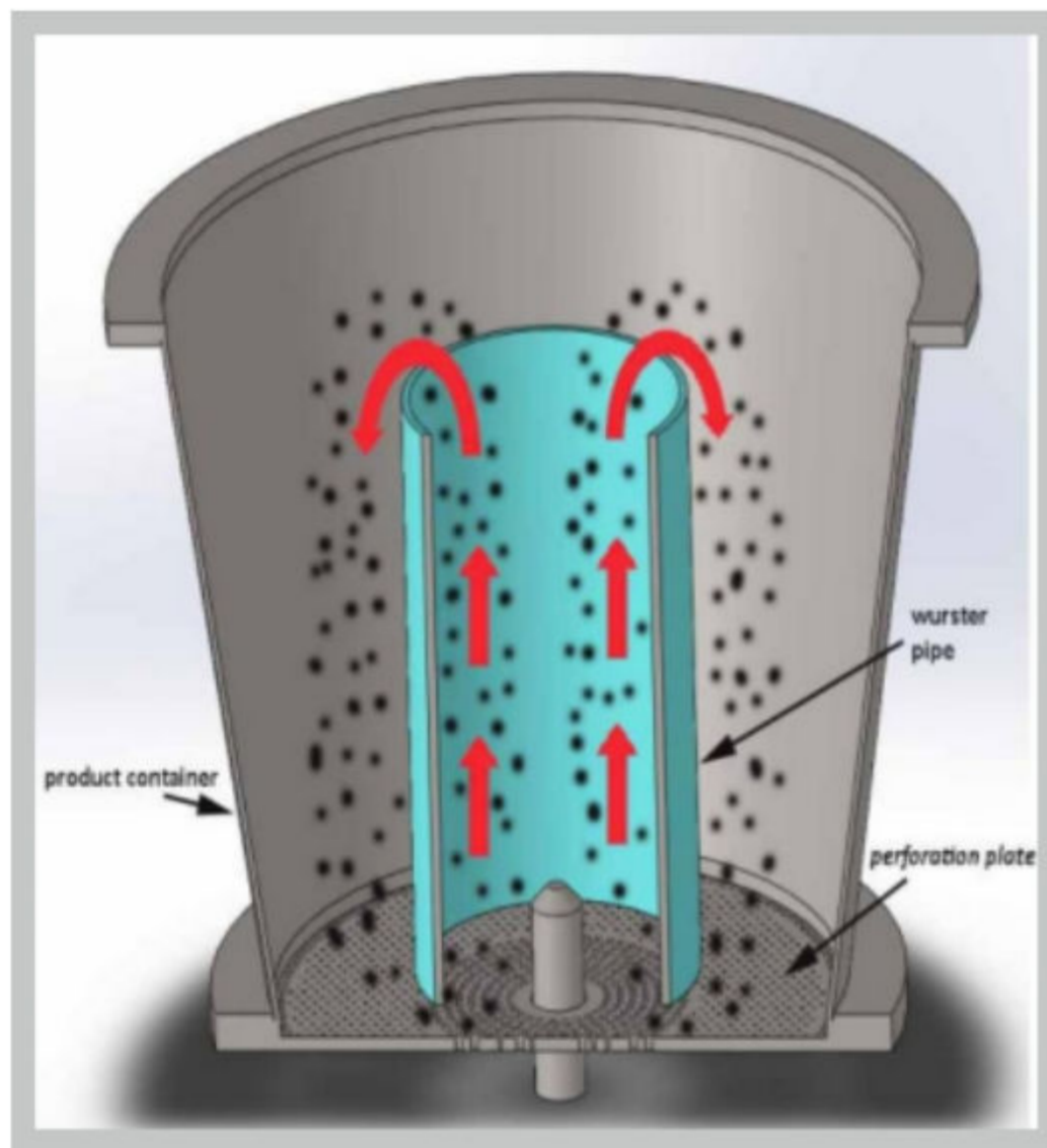
PRODUCTION MODEL

Model	Working Capacity	No. of Wurster
SFBP - 30	20-30 Kgs.	1 No.
SFBP - 60	50-60 Kgs.	1 No.
SFBP - 120	100-120 Kgs.	1 No.
SFBP - 200	150-200 Kgs.	3 Nos.
SFBP - 300	250-300 Kgs.	3 Nos.
SFBP - 500	400-500 Kgs.	5 Nos.

FLUID BED PROCESSOR / COATER



FBC 120 Kg



Wurster Technology



FBC

The SFBP is line of multi-purpose fluid bed processor designed to accomodate drying, granulation, coating operations all in one piece of equipment.

In addition a variety of options is available for material handling, control systems, clean-in-place and exhaust filtration.

Thus the SFBP provides the ultimate in terms of both processing performance and flexibility Multifunctional fluid beds.

Ointment / Cream Manufacturing Plant



Main processing vessel capacities ranging from 100L to 2000L.

System includes:-

- Main (Manufacturing) Processing vessel.**
- Vacuum rated top entry homogenizer load cell facility for process control.**
- Wax(Oil) phase Vessel and water phase vessels, with Agitator and Heating arrangement.**
- Batch storage vessel.**
- Transfer pump & recirculation pump.**
- Vacuum transfer system for wax & water to manufacture vessel.**
- Vacuum pump for main vessel & Metering pump.**
- Working platform with ladder and railing and interconnecting pipeline and valves with T.C. fittings.**
- All product contact parts SS316 and Non contact parts SS304 & Load cell facility for process control.**
- Plant suitable for all types of cream, loations, ointments, gels, toothpaste and other personal care products.**

LIQUID MANUFACTURING PLANT

Automatic and semi automatic system

Capacity ranging from 500L to 20,000L capacity main processing vessel.

Consisting of

- Sugar Melting Vessel & Sugar Solution Filtration system.
- Main Manufacturing (Processing Vessel).
- Top Entry or Bottom Entry agitator for solution Mixing.
- Recirculation facility with Inline homogeniser and online sampling system.
- Heating and cooling arrangement by steam or electrical heating temperature control system.
- Vaccum transfer system for sugar changing & Transfer pump.
- Matering pump optional & Horizontal Plate Filler suitable capacity.
- Product storage vessel interphase(connected) to bottle filling machine.
- PLC based Process Control System with data logging facility.





Since 2006

The Best Lifeline of Pharma Industry

An ISO 9001:2015 & GMP Certified Organization

SUNSAI PHARMA EQUIPMENTS PVT. LTD.

Plot No.1; Survey No.77, Near Laxmi Industrial Estate, Sativali Road,
Vasai(E), Dist. Palghar - 401208, MAHARASHTRA, INDIA.

Board Line No. +91-9029090993

Email ID: sunsaipharma@gmail.com, sunsai.pharma@rediffmail.com

Website: www.sunsaipharmaequipments.com

PRAJAKTA GADIKAR
Contact no:- +91 9029092393

AKSHATA NAIK
Contact no:- +91 8468909349

Sales & Marketing



DHIRENDRA PATIL

AGM - Marketing

Mobile :- +91- 9029021125

Email ID :- dharendra.sunsaipharma@gmail.com



JAYESH BHARUCHA

AGM - Marketing

Contact no:- +91-9029090937

Email ID:- jayesh.sunsaipharma@gmail.com



ROHIT BAGKAR

Manager - Sales & Marketing

Contact no:- +91-8850671925

Email ID:- rohit.sunsaipharma@gmail.com



RAKESH KANOJIA

Manager - Sales & Marketing

Contact no:- +91-9320006052

Email ID:- rakesh.sunsaipharma@gmail.com